

Name: _____

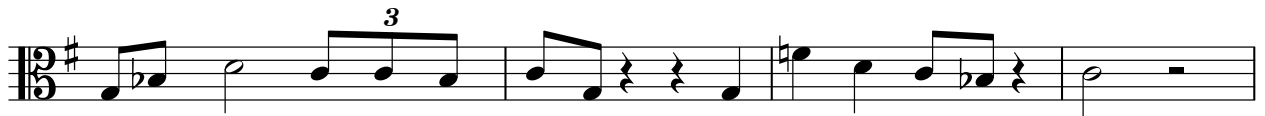
Date: _____

Cohort: _____

Learning Target:
I can compose a melody
for my blues song.

EXAMPLE: I WAS CHAINED

Mr. Shieh



I was chained be-tween two na tions and they don't care'bout me.



I was chained be-tween two na-tions and they don't care'bout me.



There's one that took my sis-ter and the o-ther won't let me flee.

DIRECTIONS

Step 1:

Count the number of **syllables** in your lyrics (you can do this by clapping). This tells you how many notes you will need in each line. You should have between 10 and 16 in each line.

Melody Line 1: _____ (Lyrics Line 1) + _____ (Lyrics Line 2) = _____

Melody Line 2: _____ (Lyrics Line 3) + _____ (Lyrics Line 4) = _____

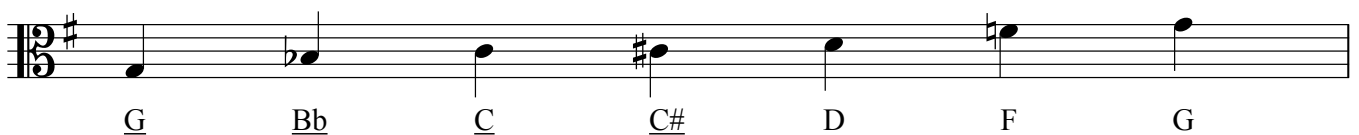
Melody Line 3: _____ (Lyrics Line 5) + _____ (Lyrics Line 6) = _____

*** Check with a partner to make sure you are correct.

Step 2:

Use your instrument to come up with **note names** for each line and write them on the back. Try singing or saying your lyrics along to the melody you have created to see if it works.

- (1) You may only use the notes in the G Blues scale: G, Bb, C, C#, D, F, G (use at least 4).
- (2) Avoid jumping around the scale a lot -- this will make your song hard to sing.
- (3) The first and second line of the melody should be similar
- (4) The last note of the entire song should be a G.



Example: G Bb D C C Bb C G G F D C Bb C

I was chained between two nations and they don't care 'bout me. _____

Lyrics Line 1+2: _____

Lyrics Line 3+4: _____

Lyrics Line 5+6: _____

Step 3:

Draw the notes below. Use different rhythms to make sure that **every measure gets 4 beats.**

= Quarter note (1 beat)

= Half note (2 beats)

= Eighth note (2 together get one beat)

= Quarter rest (1 beat)

= Triplet (3 together get one beat)

= Half rest (2 beats)

